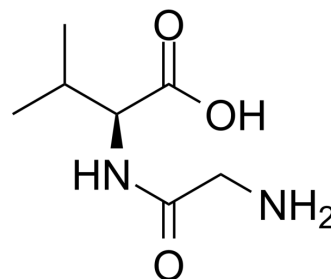


Glycyl-L-valine

Cat. No.:	HY-W016785		
CAS No.:	1963-21-9		
Molecular Formula:	C ₇ H ₁₄ N ₂ O ₃		
Molecular Weight:	174.2		
Target:	Endogenous Metabolite		
Pathway:	Metabolic Enzyme/Protease		
Storage:	Powder	-20°C	3 years
		4°C	2 years
	In solvent	-80°C	6 months
		-20°C	1 month



SOLVENT & SOLUBILITY

In Vitro

H₂O : 100 mg/mL (574.05 mM; Need ultrasonic)

DMSO : < 1 mg/mL (ultrasonic;warming;heat to 60°C) (insoluble or slightly soluble)

Concentration	Mass		
	1 mg	5 mg	10 mg
1 mM	5.7405 mL	28.7026 mL	57.4053 mL
5 mM	1.1481 mL	5.7405 mL	11.4811 mL
10 mM	0.5741 mL	2.8703 mL	5.7405 mL

Please refer to the solubility information to select the appropriate solvent.

BIOLOGICAL ACTIVITY

Description

Glycyl-L-valine is a dipeptide that contains glycine and valine.

IC₅₀ & Target

Human Endogenous Metabolite

REFERENCES

[1]. Usha C, et al. Growth and combined experimental and quantum chemical study of glycyl-L-Valine crystal. Heliyon. 2019 May 4;5(5):e01574.

Caution: Product has not been fully validated for medical applications. For research use only.

Tel: 609-228-6898

Fax: 609-228-5909

E-mail: tech@MedChemExpress.com

Address: 1 Deer Park Dr, Suite Q, Monmouth Junction, NJ 08852, USA