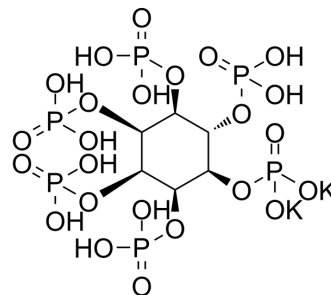


Phytic acid potassium

| | |
|---------------------------|--|
| Cat. No.: | HY-W018059 |
| CAS No.: | 129832-03-7 |
| Molecular Formula: | C ₆ H ₁₆ K ₂ O ₂₄ P ₆ |
| Molecular Weight: | 736.22 |
| Target: | Endogenous Metabolite |
| Pathway: | Metabolic Enzyme/Protease |
| Storage: | 4°C, sealed storage, away from moisture * In solvent : -80°C, 6 months; -20°C, 1 month (sealed storage, away from moisture) |



SOLVENT & SOLUBILITY

| | | | | | |
|---|--|--------------------------|--------------|-----------|------------|
| In Vitro | DMSO : 100 mg/mL (135.83 mM; Need ultrasonic) | | | | |
| | | Solvent Concentration | Mass 1 mg | 5 mg | 10 mg |
| | Preparing Stock Solutions | 1 mM | 1.3583 mL | 6.7914 mL | 13.5829 mL |
| | | 5 mM | 0.2717 mL | 1.3583 mL | 2.7166 mL |
| | | 10 mM | 0.1358 mL | 0.6791 mL | 1.3583 mL |
| Please refer to the solubility information to select the appropriate solvent. | | | | | |
| In Vivo | <ol style="list-style-type: none"> Add each solvent one by one: 10% DMSO >> 40% PEG300 >> 5% Tween-80 >> 45% saline Solubility: ≥ 2.5 mg/mL (3.40 mM); Clear solution Add each solvent one by one: 10% DMSO >> 90% (20% SBE-β-CD in saline) Solubility: ≥ 2.5 mg/mL (3.40 mM); Clear solution Add each solvent one by one: 10% DMSO >> 90% corn oil Solubility: ≥ 2.5 mg/mL (3.40 mM); Clear solution | | | | |

BIOLOGICAL ACTIVITY

| | |
|--------------------|--|
| Description | Phytic acid potassium is an endogenous metabolite. |
|--------------------|--|

Caution: Product has not been fully validated for medical applications. For research use only.

Tel: 609-228-6898

Fax: 609-228-5909

E-mail: tech@MedChemExpress.com

Address: 1 Deer Park Dr, Suite Q, Monmouth Junction, NJ 08852, USA