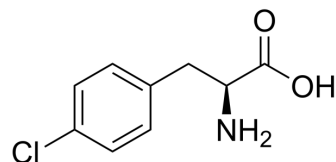


## 4-Chloro-L-phenylalanine

<b>Cat. No.:</b>	HY-W019599		
<b>CAS No.:</b>	14173-39-8		
<b>Molecular Formula:</b>	C <sub>9</sub> H <sub>10</sub> ClNO <sub>2</sub>		
<b>Molecular Weight:</b>	199.63		
<b>Target:</b>	5-HT Receptor; Tryptophan Hydroxylase		
<b>Pathway:</b>	GPCR/G Protein; Neuronal Signaling; Metabolic Enzyme/Protease		
<b>Storage:</b>	Powder	-20°C	3 years
		4°C	2 years
	In solvent	-80°C	6 months
		-20°C	1 month



### SOLVENT & SOLUBILITY

#### In Vitro

H<sub>2</sub>O : 12.5 mg/mL (62.62 mM; Need ultrasonic)

Solvent	Mass	Concentration		
		1 mg	5 mg	10 mg
Preparing Stock Solutions	1 mM	5.0093 mL	25.0463 mL	50.0927 mL
	5 mM	1.0019 mL	5.0093 mL	10.0185 mL
	10 mM	0.5009 mL	2.5046 mL	5.0093 mL

Please refer to the solubility information to select the appropriate solvent.

### BIOLOGICAL ACTIVITY

#### Description

4-Chloro-L-phenylalanine (L-PCPA) is a 5-HT biosynthesis inhibitor. 4-Chloro-L-phenylalanine is also a nonspecific antagonist of both isoforms of tryptophan hydroxylase (TPH1 and TPH2)<sup>[1]</sup>.

### REFERENCES

[1]. Chasen J Greig, et al. Enhanced serotonin signaling increases intestinal neuroplasticity. J Surg Res. 2016 Nov;206(1):151-158.

**Caution: Product has not been fully validated for medical applications. For research use only.**

Tel: 609-228-6898

Fax: 609-228-5909

E-mail: tech@MedChemExpress.com

Address: 1 Deer Park Dr, Suite Q, Monmouth Junction, NJ 08852, USA