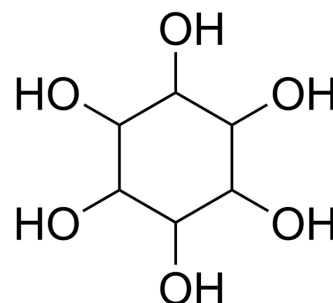


## Cyclohexane-1,2,3,4,5,6-hexaol

Cat. No.:	HY-W021265
CAS No.:	6917-35-7
Molecular Formula:	C <sub>6</sub> H <sub>12</sub> O <sub>6</sub>
Molecular Weight:	180.16
Target:	Biochemical Assay Reagents
Pathway:	Others
Storage:	<div> <div>Powder</div> <div> -20°C 3 years 4°C 2 years </div> </div> <div> <div>In solvent</div> <div> -80°C 6 months -20°C 1 month </div> </div>



### SOLVENT & SOLUBILITY

#### In Vitro

DMSO : 10 mg/mL (55.51 mM; Need ultrasonic)

	Solvent Concentration	Mass	1 mg	5 mg	10 mg
Preparing Stock Solutions	1 mM		5.5506 mL	27.7531 mL	55.5062 mL
	5 mM		1.1101 mL	5.5506 mL	11.1012 mL
	10 mM		0.5551 mL	2.7753 mL	5.5506 mL

Please refer to the solubility information to select the appropriate solvent.

### BIOLOGICAL ACTIVITY

#### Description

Cyclohexane-1,2,3,4,5,6-hexaol, also known as inositol or inositol, is a cyclic sugar alcohol consisting of a six-carbon ring with six hydroxyl groups. This compound is important for its biological activity and is widely distributed in nature, especially in plant and animal tissues. It plays a role in various physiological processes such as signal transduction, osmoregulation and lipid metabolism. In addition, Cyclohexane-1,2,3,4,5,6-hexaol has potential investigational effects, including improving conditions related to insulin resistance, polycystic ovary syndrome, and mental health conditions. It can also be used as a supplement in animal feed and human nutritional products.

#### In Vitro

Cyclohexane-1,2,3,4,5,6-hexaol is a biochemical reagent that can be used as a biological material or organic compound for life science related research.

MCE has not independently confirmed the accuracy of these methods. They are for reference only.

---

**Caution: Product has not been fully validated for medical applications. For research use only.**

Tel: 609-228-6898

Fax: 609-228-5909

E-mail: [tech@MedChemExpress.com](mailto:tech@MedChemExpress.com)

Address: 1 Deer Park Dr, Suite Q, Monmouth Junction, NJ 08852, USA