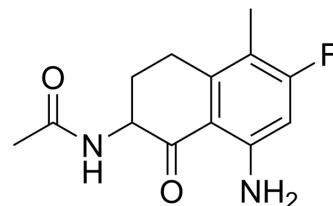


## Exatecan Intermediate 2

Cat. No.:	HY-W021377
CAS No.:	182182-31-6
Molecular Formula:	C <sub>13</sub> H <sub>15</sub> FN <sub>2</sub> O <sub>2</sub>
Molecular Weight:	250.27
Target:	ADC Cytotoxin; Topoisomerase
Pathway:	Antibody-drug Conjugate/ADC Related; Cell Cycle/DNA Damage
Storage:	4°C, protect from light, stored under nitrogen * In solvent : -80°C, 6 months; -20°C, 1 month (protect from light, stored under nitrogen)



### SOLVENT & SOLUBILITY

In Vitro	DMSO : 100 mg/mL (399.57 mM; Need ultrasonic) H <sub>2</sub> O : < 0.1 mg/mL (insoluble)					
	Preparing Stock Solutions	<div>Solvent Concentration</div>	Mass	1 mg	5 mg	10 mg
		1 mM	3.9957 mL	19.9784 mL	39.9568 mL	
		5 mM	0.7991 mL	3.9957 mL	7.9914 mL	
		10 mM	0.3996 mL	1.9978 mL	3.9957 mL	
Please refer to the solubility information to select the appropriate solvent.						
In Vivo	1. Add each solvent one by one: 10% DMSO >> 40% PEG300 >> 5% Tween-80 >> 45% saline Solubility: ≥ 5 mg/mL (19.98 mM); Clear solution					
	2. Add each solvent one by one: 10% DMSO >> 90% (20% SBE-β-CD in saline) Solubility: 5 mg/mL (19.98 mM); Suspended solution; Need ultrasonic					

### BIOLOGICAL ACTIVITY

Description	Exatecan Intermediate 2 (compound B) is an intermediate of Exatecan (DX-8951, HY-13631). Exatecan is an anticancer agent belonging to the class of camptothecin analogs. Exatecan interferes with the proliferation and division of tumor cells by interacting with DNA, thereby inhibiting tumor growth. Exatecan is primarily used for research of a variety of cancers including ovarian, lung and breast cancers <sup>[1][2]</sup> .
IC <sub>50</sub> & Target	Camptothecins

### REFERENCES

---

[1]. Weng W, et al. Antibody-Exatecan Conjugates with a Novel Self-immolative Moiety Overcome Resistance in Colon and Lung Cancer. Cancer Discov. 2023 Apr 3;13(4):950-973.

[2]. Lv Xianyu, et al. Preparation of camptothecin derivative intermediate. China, CN115197088. 2022-10-18.

---

**Caution: Product has not been fully validated for medical applications. For research use only.**

Tel: 609-228-6898

Fax: 609-228-5909

E-mail: [tech@MedChemExpress.com](mailto:tech@MedChemExpress.com)

Address: 1 Deer Park Dr, Suite Q, Monmouth Junction, NJ 08852, USA