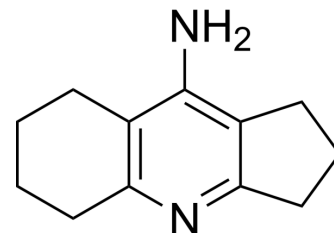


## Ipidacrine

Cat. No.:	HY-W027553
CAS No.:	62732-44-9
Molecular Formula:	C <sub>12</sub> H <sub>16</sub> N <sub>2</sub>
Molecular Weight:	188.27
Target:	Cholinesterase (ChE)
Pathway:	Neuronal Signaling
Storage:	4°C, protect from light * In solvent : -80°C, 6 months; -20°C, 1 month (protect from light)



### BIOLOGICAL ACTIVITY

Description	2,3,5,6,7,8-Hexahydro-1H-cyclopenta[b]quinolin-9-amine is a pharmaceutically active compound which is a nootropic agent that acts as cholinesterase inhibitor and is used in research of Alzheimer disease <sup>[1]</sup> .
-------------	---

### REFERENCES

[1]. A.Dubika, K. Veldre, et al. Phase Transitions of Ipidacrine Hydrochloride Polymorphs and Hydrates. The Open Conference Proceedings Journal, 2011, 2, 21-27.

**Caution: Product has not been fully validated for medical applications. For research use only.**

Tel: 609-228-6898

Fax: 609-228-5909

E-mail: tech@MedChemExpress.com

Address: 1 Deer Park Dr, Suite Q, Monmouth Junction, NJ 08852, USA