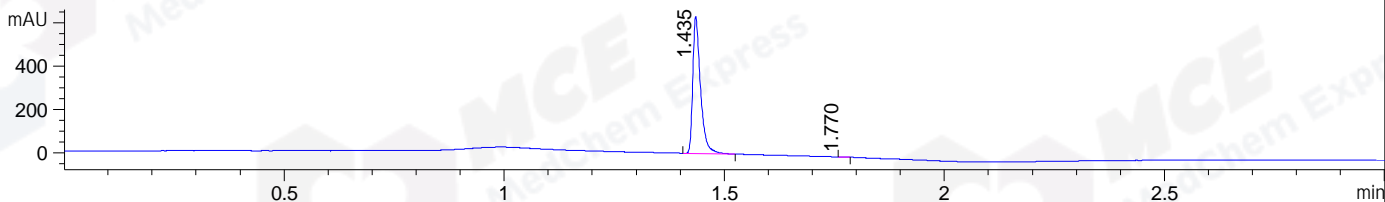
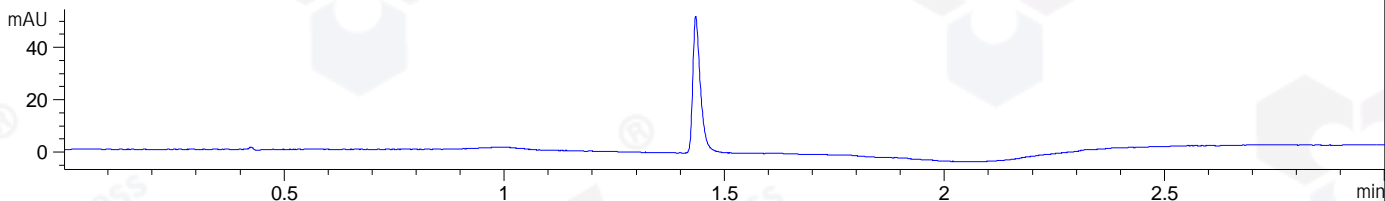


File ..\DATA\2019\20190921\714\BIZ2019-909-WMX89.D Tgt Mass (CHM):  
Injection Date : 21 Sep 19 10:11 am +0800 Seq. Line : 13  
Sample Name : BIZ2019-909-WMX89 Location : P1-C-01  
Acq. Operator : ZJ\_1432 Inj : 1  
Spec. Reported : MS Integration Inj Volume : 0.3 ul  
Acq. Method : D:\Chem32\1\data\2019\20190921\714\1-POS-3MIN.M  
Analysis Method : D:\CHEM32\1\DATA\2019\20190921\714\1-POS-3MIN.M  
Catalog No : HY-W027968 Batch#46033  
Method Info : Mobile Phase: A: water(0.01%TFA) B:ACN(0.01%TFA)  
Gradient: 5% to 95%B within 1.3 min  
Flow Rate :1.8ml/min  
Column :SunFire C18, 4.6\*50mm,3.5um A-RP-433  
Oven Temperature : 45

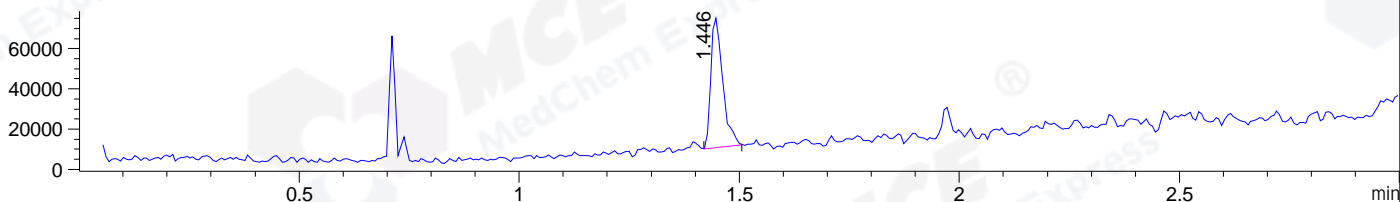
DAD1 B, Sig=214,4 Ref=off



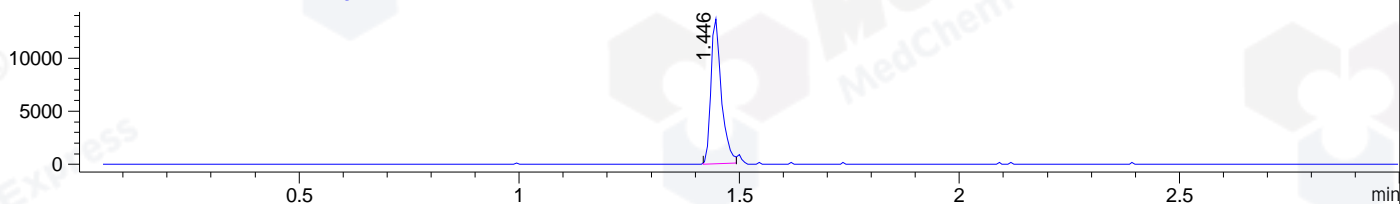
DAD1 C, Sig=254,4 Ref=off



MSD1 TIC, MS File ES-API, Pos, Scan, Frag: 70



Ion 191.03, MSD1 191.03, Target Mass 190.03 +H Positive, EIC=190.73:191.73



## Integration Results for DAD1 B, Sig=214,4 Ref=off

RetTim	Width	Area	Height	Area%	MS (+)
1.44	0.02	773.79	633.89	99.86	213
1.77	0.02	1.05	0.81	0.14	329

## Integration Results for DAD1 C, Sig=254,4 Ref=off

RetTim	Width	Area	Height	Area%	MS (+)
1.446	0.03	120933.02	64696.64	100.00	213

## Integration Results for MSD1 TIC, MS File

RetTim	Width	Area	Height	Area%	MS (+)
1.45	0.03	120933.02	64696.64	100.00	213

Ret. Time: 1.45

<<<< POSITIVE SPECTRA >>>>

