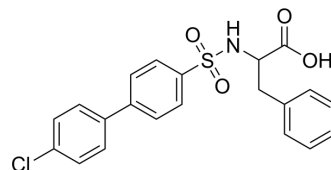


## ((4'-Chloro-[1,1'-biphenyl]-4-yl)sulfonyl)phenylalanine

Cat. No.:	HY-W030573
CAS No.:	1449133-06-5
Molecular Formula:	C <sub>21</sub> H <sub>18</sub> ClNO <sub>4</sub> S
Molecular Weight:	415.89
Target:	Amino Acid Derivatives
Pathway:	Others
Storage:	Please store the product under the recommended conditions in the Certificate of Analysis.



### BIOLOGICAL ACTIVITY

Description	((4'-Chloro-[1,1'-biphenyl]-4-yl)sulfonyl)phenylalanine is a phenylalanine derivative <sup>[1]</sup> .
In Vitro	Amino acids and amino acid derivatives have been commercially used as ergogenic supplements. They influence the secretion of anabolic hormones, supply of fuel during exercise, mental performance during stress related tasks and prevent exercise induced muscle damage. They are recognized to be beneficial as ergogenic dietary substances <sup>[1]</sup> . MCE has not independently confirmed the accuracy of these methods. They are for reference only.

### REFERENCES

[1]. Luckose F, et al. Effects of amino acid derivatives on physical, mental, and physiological activities. Crit Rev Food Sci Nutr. 2015;55(13):1793-879.

**Caution: Product has not been fully validated for medical applications. For research use only.**

Tel: 609-228-6898

Fax: 609-228-5909

E-mail: tech@MedChemExpress.com

Address: 1 Deer Park Dr, Suite Q, Monmouth Junction, NJ 08852, USA