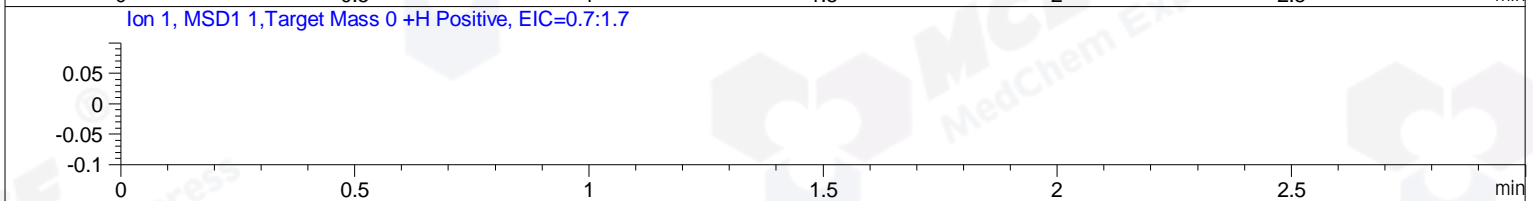
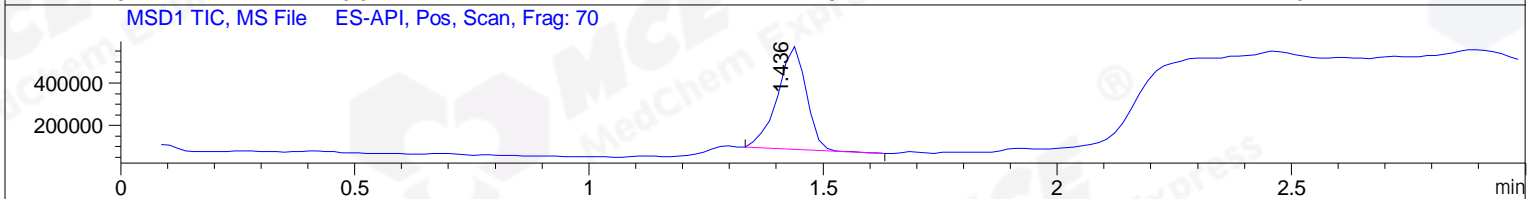
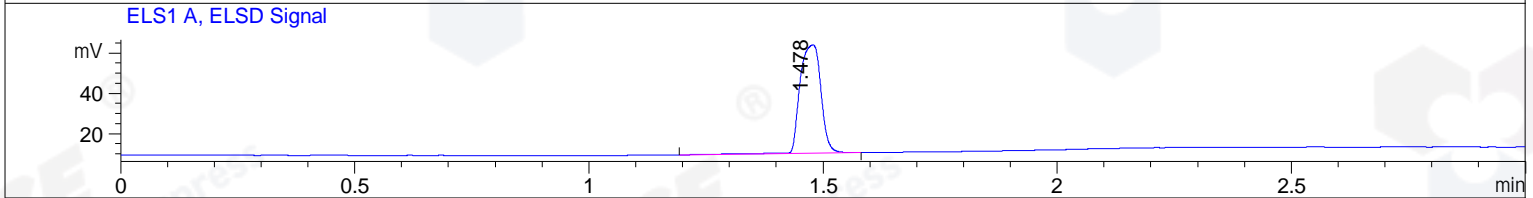
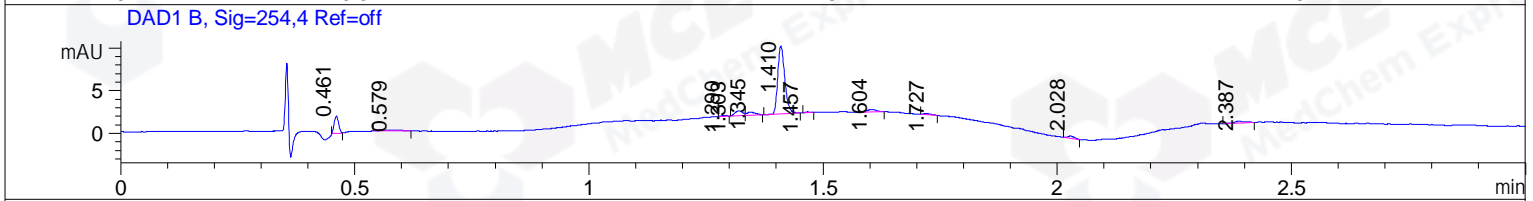
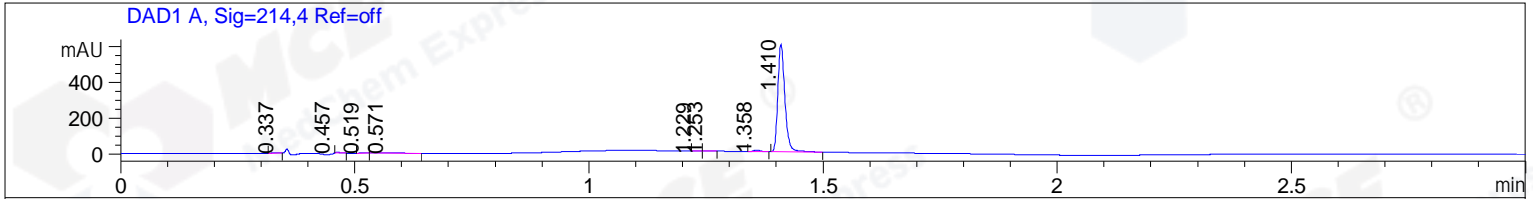


File ..Data\20171221\20171221-4\LJ2017-1220-0032.D Tgt Mass (CHM):
 Injection Date : 21 Dec 17 8:30 pm +0800 Seq. Line : 54
 Sample Name : LJ2017-1220-0032 Location : P2-A-08
 Acq. Operator : SYSTEM Inj : 1
 Spec. Reported : MS Integration Inj Volume : 1 ul
 Acq. Method : D:\LCMS03\Data\20171221\20171221-4\1-POS-3MIN.M
 Analysis Method : D:\LCMS03\Data\20171221\20171221-4\1-POS-3MIN.M
 Catalog No : HY-W041994 Batch# 55449
 Method Info : Mobile Phase: A: water(0.01%TFA) B:ACN(0.01%TFA)
 Gradient: 5% to 95%B within 1.3 min
 Flow Rate :1.8ml/min
 Column :SunFire C18, 4.6*50mm,3.5um A-RP-186
 Oven Temperature : 45C



Integration Results for DAD1 A, Sig=214,4 Ref=off

RetTim	Width	Area	Height	Area%	MS (+)
0.34	0.02	1.22	1.11	0.19	161
0.46	0.01	3.16	1.11	0.49	161
0.52	0.02	0.46	0.50	0.07	161
0.57	0.05	4.12	1.21	0.64	161
1.23	0.01	0.29	0.39	0.04	161
1.25	0.01	1.00	1.13	0.15	163
1.36	0.02	8.04	8.11	1.24	335
1.41	0.02	629.93	601.30	97.18	303

Integration Results for DAD1 B, Sig=254,4 Ref=off

RetTim	Width	Area	Height	Area%	MS (+)
0.46	0.01	1.28	1.97	10.36	161
0.58	0.05	0.40	0.13	3.25	161
1.29	0.01	0.06	0.08	0.51	267
1.30	0.02	0.62	-0.01	5.04	163
1.35	0.02	0.46	0.36	3.69	335
1.41	0.02	8.25	7.90	66.72	303

1.46	0.01	0.06	-0.00	0.47	303
1.60	0.02	0.45	0.31	3.66	233
1.73	0.02	0.15	0.12	1.17	233
2.03	0.02	0.26	0.26	2.10	233
2.39	0.02	0.37	0.21	3.00	105

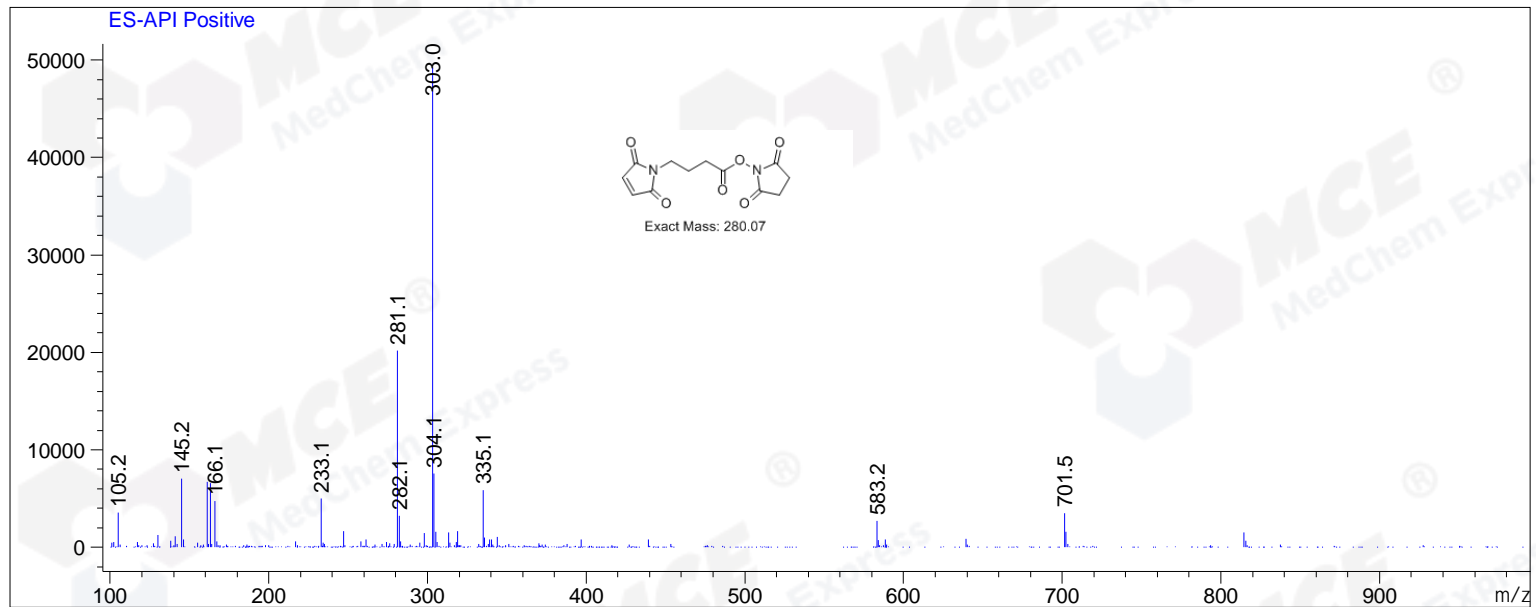
Integration Results for MSD1 TIC, MS File

RetTim	Width	Area	Height	Area%	MS (+)
1.44	0.07	2094526.00	486926.25	100.00	303

Ret. Time: 1.44

<<<< POSITIVE SPECTRA >>>>

ES-API Positive



*** End of Report ***