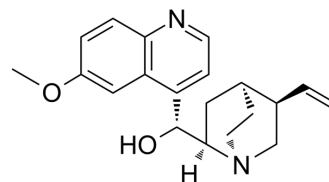


Epiquinidine

Cat. No.:	HY-W048510
CAS No.:	572-59-8
Molecular Formula:	C ₂₀ H ₂₄ N ₂ O ₂
Molecular Weight:	324.42
Target:	Others
Pathway:	Others
Storage:	Please store the product under the recommended conditions in the Certificate of Analysis.



BIOLOGICAL ACTIVITY

Description	Epiquinidine, a quinine analogue, can be used as the ggTas2r1 agonist. Epiquinidine activates ggTas2r1 at or beyond 10 μM [1].
IC ₅₀ & Target	ggTas2r1 ^[1]

REFERENCES

[1]. Pizio AD, et, al. Ligand binding modes from low resolution GPCR models and mutagenesis: chicken bitter taste receptor as a test-case. Sci Rep. 2017 Aug 15;7(1):8223.

Caution: Product has not been fully validated for medical applications. For research use only.

Tel: 609-228-6898

Fax: 609-228-5909

E-mail: tech@MedChemExpress.com

Address: 1 Deer Park Dr, Suite Q, Monmouth Junction, NJ 08852, USA