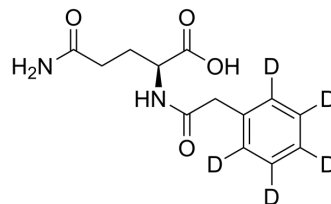


## Phenylacetylglutamine-d<sub>5</sub>

<b>Cat. No.:</b>	HY-W050026S		
<b>CAS No.:</b>	1331909-01-3		
<b>Molecular Formula:</b>	C <sub>13</sub> H <sub>11</sub> D <sub>5</sub> N <sub>2</sub> O <sub>4</sub>		
<b>Molecular Weight:</b>	269.31		
<b>Target:</b>	Endogenous Metabolite; Isotope-Labeled Compounds		
<b>Pathway:</b>	Metabolic Enzyme/Protease; Others		
<b>Storage:</b>	Powder	-20°C	3 years
		4°C	2 years
	In solvent	-80°C	6 months
		-20°C	1 month



### SOLVENT & SOLUBILITY

#### In Vitro

DMSO : ≥ 50 mg/mL (185.66 mM)  
 \* "≥" means soluble, but saturation unknown.

Preparing Stock Solutions	Solvent Concentration	Mass		
		1 mg	5 mg	10 mg
	1 mM	3.7132 mL	18.5660 mL	37.1319 mL
	5 mM	0.7426 mL	3.7132 mL	7.4264 mL
	10 mM	0.3713 mL	1.8566 mL	3.7132 mL

Please refer to the solubility information to select the appropriate solvent.

#### In Vivo

- Add each solvent one by one: 10% DMSO >> 40% PEG300 >> 5% Tween-80 >> 45% saline  
 Solubility: ≥ 1.25 mg/mL (4.64 mM); Clear solution
- Add each solvent one by one: 10% DMSO >> 90% (20% SBE-β-CD in saline)  
 Solubility: ≥ 1.25 mg/mL (4.64 mM); Clear solution
- Add each solvent one by one: 10% DMSO >> 90% corn oil  
 Solubility: ≥ 1.25 mg/mL (4.64 mM); Clear solution

### BIOLOGICAL ACTIVITY

#### Description

Phenylacetylglutamine-d<sub>5</sub> is the deuterium labeled Phenylacetylglutamine. Phenylacetylglutamine is a colonic microbial metabolite from amino acid fermentation[1].

### CUSTOMER VALIDATION

- 
- ESC Heart Fail. 2022 May 27.

See more customer validations on [www.MedChemExpress.com](http://www.MedChemExpress.com)

## REFERENCES

---

[1]. Poesen R, et al. Microbiota-Derived Phenylacetylglutamine Associates with Overall Mortality and Cardiovascular Disease in Patients with CKD. J Am Soc Nephrol. 2016 Nov;27(11):3479-3487.

---

**Caution: Product has not been fully validated for medical applications. For research use only.**

Tel: 609-228-6898

Fax: 609-228-5909

E-mail: [tech@MedChemExpress.com](mailto:tech@MedChemExpress.com)

Address: 1 Deer Park Dr, Suite Q, Monmouth Junction, NJ 08852, USA