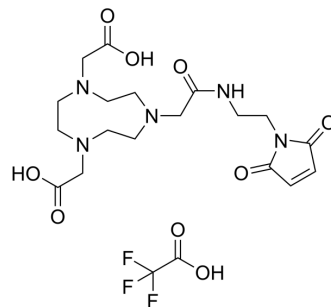


Maleimide-NOTA TFA

Cat. No.:	HY-W087027A
Molecular Formula:	C ₂₀ H ₂₈ F ₃ N ₅ O ₉
Molecular Weight:	539.46
Target:	Biochemical Assay Reagents
Pathway:	Others
Storage:	Please store the product under the recommended conditions in the Certificate of Analysis.



BIOLOGICAL ACTIVITY

Description

Maleimide-NOTA (TFA) is a bifunctional chelator (Bifunctional Chelator; BFC) and a macrocyclic NOTA derivative used for tumor pre-targeting. Maleimide-NOTA (TFA) can be used for conjugation of peptides and radionuclides.

Caution: Product has not been fully validated for medical applications. For research use only.

Tel: 609-228-6898

Fax: 609-228-5909

E-mail: tech@MedChemExpress.com

Address: 1 Deer Park Dr, Suite Q, Monmouth Junction, NJ 08852, USA