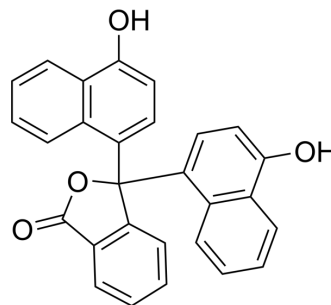


## alpha-Naphtholphthalein

Cat. No.:	HY-W087913
CAS No.:	596-01-0
Molecular Formula:	C <sub>28</sub> H <sub>18</sub> O <sub>4</sub>
Molecular Weight:	418.44
Target:	Biochemical Assay Reagents
Pathway:	Others
Storage:	Please store the product under the recommended conditions in the Certificate of Analysis.



### BIOLOGICAL ACTIVITY

#### Description

alpha-Naphtholphthalein is an indicator that is light yellow at pH 6 and gradually shows a clear color change with increasing pH to light green-green-blue. alpha-Naphtholphthalein can be impregnated into cotton-blend fabrics and used to develop medical supplies for wound pH monitoring, such as medical gauze, hospital gowns and compression bandages<sup>[1]</sup>.

### REFERENCES

[1]. Seo HS, et al. Facile and cost-effective fabrication of wearable alpha-naphtholphthalein-based halochromic sensor for wound pH monitoring. Nanotechnology. 2024 Mar 27;35(24).

**Caution: Product has not been fully validated for medical applications. For research use only.**

Tel: 609-228-6898

Fax: 609-228-5909

E-mail: tech@MedChemExpress.com

Address: 1 Deer Park Dr, Suite Q, Monmouth Junction, NJ 08852, USA