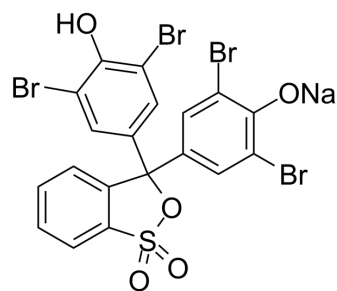


Bromophenol blue sodium

Cat. No.:	HY-W088001
CAS No.:	34725-61-6
Molecular Formula:	C ₁₉ H ₉ Br ₄ NaO ₅ S
Molecular Weight:	691.94
Target:	Biochemical Assay Reagents
Pathway:	Others
Storage:	Please store the product under the recommended conditions in the Certificate of Analysis.



BIOLOGICAL ACTIVITY

Description

Bromophenol blue sodium salt is a biochemical reagent that can be used as a biological material or organic compound for life science related research.

Caution: Product has not been fully validated for medical applications. For research use only.

Tel: 609-228-6898

Fax: 609-228-5909

E-mail: tech@MedChemExpress.com

Address: 1 Deer Park Dr, Suite Q, Monmouth Junction, NJ 08852, USA