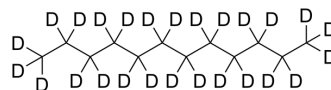


## Dodecane-d<sub>26</sub>

<b>Cat. No.:</b>	HY-W099602S		
<b>CAS No.:</b>	16416-30-1		
<b>Molecular Formula:</b>	C <sub>12</sub> D <sub>26</sub>		
<b>Molecular Weight:</b>	196.5		
<b>Target:</b>	Isotope-Labeled Compounds		
<b>Pathway:</b>	Others		
<b>Storage:</b>	Pure form	-20°C	3 years
		4°C	2 years
	In solvent	-80°C	6 months
		-20°C	1 month



### SOLVENT & SOLUBILITY

<b>In Vitro</b>	DMSO : 100 mg/mL (508.91 mM; Need ultrasonic)				
		Solvent Concentration	Mass 1 mg	5 mg	10 mg
	<b>Preparing Stock Solutions</b>	1 mM	5.0891 mL	25.4453 mL	50.8906 mL
		5 mM	1.0178 mL	5.0891 mL	10.1781 mL
10 mM		0.5089 mL	2.5445 mL	5.0891 mL	
Please refer to the solubility information to select the appropriate solvent.					
<b>In Vivo</b>	<ol style="list-style-type: none"> <li>Add each solvent one by one: 10% DMSO &gt;&gt; 40% PEG300 &gt;&gt; 5% Tween-80 &gt;&gt; 45% saline Solubility: ≥ 2.5 mg/mL (12.72 mM); Clear solution</li> <li>Add each solvent one by one: 10% DMSO &gt;&gt; 90% (20% SBE-β-CD in saline) Solubility: 2.5 mg/mL (12.72 mM); Suspended solution; Need ultrasonic</li> <li>Add each solvent one by one: 10% DMSO &gt;&gt; 90% corn oil Solubility: ≥ 2.5 mg/mL (12.72 mM); Clear solution</li> </ol>				

### BIOLOGICAL ACTIVITY

<b>Description</b>	Dodecane-d <sub>26</sub> is the deuterium labeled Dodecane[1].
<b>In Vitro</b>	<p>Stable heavy isotopes of hydrogen, carbon, and other elements have been incorporated into drug molecules, largely as tracers for quantitation during the drug development process. Deuteration has gained attention because of its potential to affect the pharmacokinetic and metabolic profiles of drugs<sup>[1]</sup>.</p> <p>MCE has not independently confirmed the accuracy of these methods. They are for reference only.</p>

---

## REFERENCES

---

[1]. Russak EM, et al. Impact of Deuterium Substitution on the Pharmacokinetics of Pharmaceuticals. *Ann Pharmacother.* 2019;53(2):211-216.

---

**Caution: Product has not been fully validated for medical applications. For research use only.**

Tel: 609-228-6898

Fax: 609-228-5909

E-mail: [tech@MedChemExpress.com](mailto:tech@MedChemExpress.com)

Address: 1 Deer Park Dr, Suite Q, Monmouth Junction, NJ 08852, USA