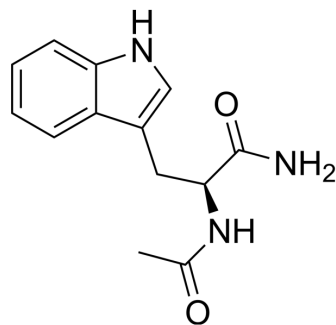


N-Acetyl-L-tryptophanamide

Cat. No.:	HY-W101377
CAS No.:	2382-79-8
Molecular Formula:	C ₁₃ H ₁₅ N ₃ O ₂
Molecular Weight:	245.28
Target:	Amino Acid Derivatives
Pathway:	Others
Storage:	Please store the product under the recommended conditions in the Certificate of Analysis.



BIOLOGICAL ACTIVITY

Description

N-Acetyl-L-tryptophanamide (NATA) is amino acids and their derivatives.

Caution: Product has not been fully validated for medical applications. For research use only.

Tel: 609-228-6898

Fax: 609-228-5909

E-mail: tech@MedChemExpress.com

Address: 1 Deer Park Dr, Suite Q, Monmouth Junction, NJ 08852, USA