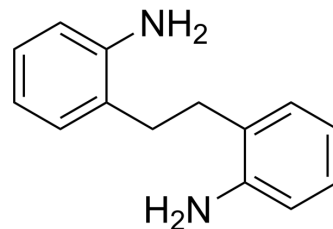


## 2,2'-(Ethane-1,2-diyl)dianiline

Cat. No.:	HY-W104012
CAS No.:	34124-14-6
Molecular Formula:	C <sub>14</sub> H <sub>16</sub> N <sub>2</sub>
Molecular Weight:	212.29
Target:	Biochemical Assay Reagents
Pathway:	Others
Storage:	Please store the product under the recommended conditions in the Certificate of Analysis.



### BIOLOGICAL ACTIVITY

Description	2,2'-(Ethane-1,2-diyl)dianiline (2,2'-Ethylenedianiline) can be utilized as precursor of metal complex <sup>[1]</sup> .
-------------	---

### REFERENCES

[1]. Sarkar S, et al., Catecholase activities of copper (ii) complexes with N<sub>4</sub> ligands[J]. Bulletin of the Korean Chemical Society, 2021, 42(7): 1037-1046.

**Caution: Product has not been fully validated for medical applications. For research use only.**

Tel: 609-228-6898

Fax: 609-228-5909

E-mail: tech@MedChemExpress.com

Address: 1 Deer Park Dr, Suite Q, Monmouth Junction, NJ 08852, USA