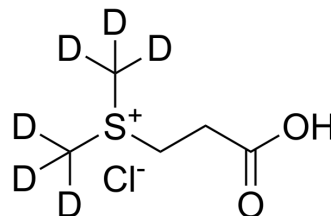


(2-Carboxyethyl)dimethylsulfonium-d₆ chloride

Cat. No.:	HY-W105506S
CAS No.:	1246274-70-3
Molecular Formula:	C ₅ H ₃ D ₆ ClO ₂ S
Molecular Weight:	176.69
Target:	Isotope-Labeled Compounds
Pathway:	Others
Storage:	4°C, sealed storage, away from moisture * In solvent : -80°C, 6 months; -20°C, 1 month (sealed storage, away from moisture)



SOLVENT & SOLUBILITY

In Vitro	DMSO : 50 mg/mL (282.98 mM; Need ultrasonic)				
		Solvent Concentration	Mass		
	Preparing Stock Solutions		1 mg	5 mg	10 mg
		1 mM	5.6596 mL	28.2981 mL	56.5963 mL
		5 mM	1.1319 mL	5.6596 mL	11.3193 mL
	10 mM	0.5660 mL	2.8298 mL	5.6596 mL	
Please refer to the solubility information to select the appropriate solvent.					
In Vivo	1. Add each solvent one by one: 10% DMSO >> 40% PEG300 >> 5% Tween-80 >> 45% saline Solubility: ≥ 2.5 mg/mL (14.15 mM); Clear solution				
	2. Add each solvent one by one: 10% DMSO >> 90% (20% SBE-β-CD in saline) Solubility: ≥ 2.5 mg/mL (14.15 mM); Clear solution				
	3. Add each solvent one by one: 10% DMSO >> 90% corn oil Solubility: ≥ 2.5 mg/mL (14.15 mM); Clear solution				

BIOLOGICAL ACTIVITY

Description	(2-Carboxyethyl)dimethylsulfonium-d ₆ chloride is the deuterium labeled (2-Carboxyethyl)dimethylsulfonium chloride[1].
In Vitro	Stable heavy isotopes of hydrogen, carbon, and other elements have been incorporated into drug molecules, largely as tracers for quantitation during the drug development process. Deuteration has gained attention because of its potential to affect the pharmacokinetic and metabolic profiles of drugs ^[1] . MCE has not independently confirmed the accuracy of these methods. They are for reference only.

REFERENCES

Caution: Product has not been fully validated for medical applications. For research use only.

Tel: 609-228-6898

Fax: 609-228-5909

E-mail: tech@MedChemExpress.com

Address: 1 Deer Park Dr, Suite Q, Monmouth Junction, NJ 08852, USA