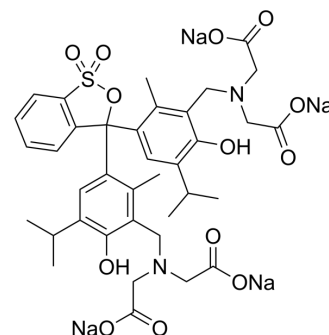


Methylthymol blue tetrasodium

Cat. No.:	HY-W110904
CAS No.:	1945-77-3
Molecular Formula:	C ₃₇ H ₄₀ N ₂ Na ₄ O ₁₃ S
Molecular Weight:	844.74
Target:	Fluorescent Dye
Pathway:	Others
Storage:	4°C, protect from light, stored under nitrogen * In solvent : -80°C, 6 months; -20°C, 1 month (protect from light, stored under nitrogen)



BIOLOGICAL ACTIVITY

Description

Methylthymol blue tetrasodium is a metallochromic indicator dye and can be used for determination of sulfate and calcium [1][2].

REFERENCES

- [1]. Adamski J M, et al. Application of the methylthymol blue sulfate method to water and wastewater analysis. Analytical Chemistry, 1975, 47(7): 1191-1194.
- [2]. Gindler EM, et al. Rapid colorimetric determination of calcium in biologic fluids with methylthymol blue. Am J Clin Pathol. 1972 Oct;58(4):376-82.

Caution: Product has not been fully validated for medical applications. For research use only.

Tel: 609-228-6898

Fax: 609-228-5909

E-mail: tech@MedChemExpress.com

Address: 1 Deer Park Dr, Suite Q, Monmouth Junction, NJ 08852, USA