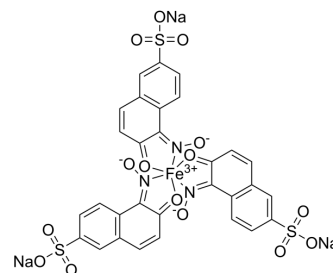


## Naphthol green B

<b>Cat. No.:</b>	HY-W110905
<b>CAS No.:</b>	19381-50-1
<b>Molecular Formula:</b>	C <sub>30</sub> H <sub>15</sub> FeN <sub>3</sub> Na <sub>3</sub> O <sub>15</sub> S <sub>3</sub>
<b>Molecular Weight:</b>	878.46
<b>Target:</b>	Fluorescent Dye
<b>Pathway:</b>	Others
<b>Storage:</b>	4°C, sealed storage, away from moisture * In solvent : -80°C, 6 months; -20°C, 1 month (sealed storage, away from moisture)



### BIOLOGICAL ACTIVITY

#### Description

Naphthol green B is an iron-complex dye. Naphthol green B can be used in wool dyeing, silk dyeing and polyamide dyeing. Naphthol green B can be used to fabricate electrochemical sensor for the detection of H<sub>2</sub>O<sub>2</sub><sup>[1][2]</sup>.

### REFERENCES

- [1]. Xiao X, et al. Biodecolorization of Naphthol Green B dye by *Shewanella oneidensis* MR-1 under anaerobic conditions. *Bioresour Technol.* 2012 Apr;110:86-90.
- [2]. <https://pubmed.ncbi.nlm.nih.gov/22349191/>

**Caution: Product has not been fully validated for medical applications. For research use only.**

Tel: 609-228-6898

Fax: 609-228-5909

E-mail: [tech@MedChemExpress.com](mailto:tech@MedChemExpress.com)

Address: 1 Deer Park Dr, Suite Q, Monmouth Junction, NJ 08852, USA