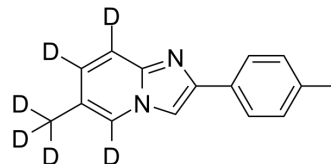


6-Methyl-2-(p-tolyl)imidazo[1,2-a]pyridine-d6

Cat. No.:	HY-W114441S
CAS No.:	959605-52-8
Molecular Formula:	C ₁₅ H ₈ D ₆ N ₂
Molecular Weight:	228.32
Storage:	Please store the product under the recommended conditions in the Certificate of Analysis.



Caution: Product has not been fully validated for medical applications. For research use only.

Tel: 609-228-6898

Fax: 609-228-5909

E-mail: tech@MedChemExpress.com

Address: 1 Deer Park Dr, Suite Q, Monmouth Junction, NJ 08852, USA