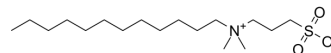


## Sulfobetaine-12

<b>Cat. No.:</b>	HY-W127620
<b>CAS No.:</b>	14933-08-5
<b>Molecular Formula:</b>	C <sub>17</sub> H <sub>37</sub> NO <sub>3</sub> S
<b>Molecular Weight:</b>	335.55
<b>Target:</b>	Biochemical Assay Reagents
<b>Pathway:</b>	Others
<b>Storage:</b>	4°C, protect from light, stored under nitrogen * In solvent : -80°C, 6 months; -20°C, 1 month (protect from light, stored under nitrogen)



### SOLVENT & SOLUBILITY

<b>In Vitro</b>	DMSO : 50 mg/mL (149.01 mM); ultrasonic and warming and heat to 60°C)					
		Solvent Concentration	Mass			
	<b>Preparing Stock Solutions</b>			1 mg	5 mg	10 mg
		1 mM		2.9802 mL	14.9009 mL	29.8018 mL
		5 mM		0.5960 mL	2.9802 mL	5.9604 mL
	10 mM		0.2980 mL	1.4901 mL	2.9802 mL	
Please refer to the solubility information to select the appropriate solvent.						
<b>In Vivo</b>	1. Add each solvent one by one: 10% DMSO >> 40% PEG300 >> 5% Tween-80 >> 45% saline Solubility: ≥ 2.5 mg/mL (7.45 mM); Clear solution					
	2. Add each solvent one by one: 10% DMSO >> 90% (20% SBE-β-CD in saline) Solubility: ≥ 2.5 mg/mL (7.45 mM); Clear solution					
	3. Add each solvent one by one: 10% DMSO >> 90% corn oil Solubility: ≥ 2.5 mg/mL (7.45 mM); Clear solution					

### BIOLOGICAL ACTIVITY

<b>Description</b>	Sulfobetaine-12 is a biochemical reagent that can be used as a biological material or organic compound for life science related research.
--------------------	---

**Caution: Product has not been fully validated for medical applications. For research use only.**

Tel: 609-228-6898

Fax: 609-228-5909

E-mail: tech@MedChemExpress.com

Address: 1 Deer Park Dr, Suite Q, Monmouth Junction, NJ 08852, USA