

## H2TMpyP-2 (chloride)

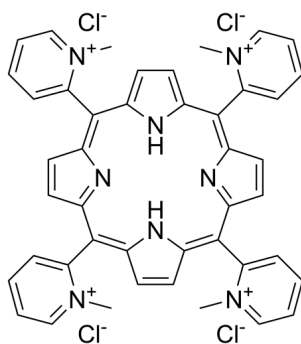
Cat. No.: HY-W127820  
Batch No.: 291287  
CAS No.: 129051-18-9  
Molecular Formula: C<sub>44</sub>H<sub>38</sub>Cl<sub>4</sub>N<sub>8</sub>

### ANALYTICAL DATA

Theoretical: C(64.40%), H(4.67%), N(13.65%), Cl(17.28%)

Result: C(58.48%), H(5.08%), N(12.36%), Cl(15.10%)

Chemical Structure:



**Caution: Product has not been fully validated for medical applications. For research use only.**

Tel: 609-228-6898

Fax: 609-228-5909

E-mail: [tech@MedChemExpress.com](mailto:tech@MedChemExpress.com)

Address: 1 Deer Park Dr, Suite Q, Monmouth Junction, NJ 08852, USA