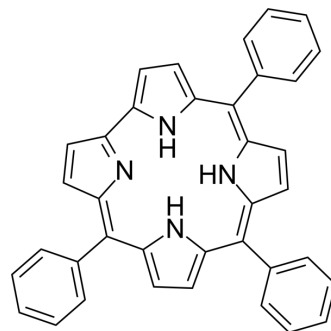


5,10,15-Triphenylcorrole

Cat. No.:	HY-W127822
CAS No.:	246231-45-8
Molecular Formula:	C ₃₇ H ₂₆ N ₄
Molecular Weight:	526.63
Target:	Biochemical Assay Reagents
Pathway:	Others
Storage:	Please store the product under the recommended conditions in the Certificate of Analysis.



BIOLOGICAL ACTIVITY

Description	5,10,15-tris(phenyl)corrole is a corrole derivative used as a trianionic ligand for transition metals.
-------------	--

Caution: Product has not been fully validated for medical applications. For research use only.

Tel: 609-228-6898

Fax: 609-228-5909

E-mail: tech@MedChemExpress.com

Address: 1 Deer Park Dr, Suite Q, Monmouth Junction, NJ 08852, USA