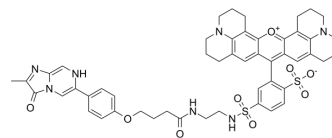


## Red-CLA

Cat. No.:	HY-W127852
CAS No.:	886840-56-8
Molecular Formula:	C <sub>50</sub> H <sub>51</sub> N <sub>7</sub> O <sub>9</sub> S <sub>2</sub>
Molecular Weight:	958.11
Target:	Biochemical Assay Reagents
Pathway:	Others
Storage:	Please store the product under the recommended conditions in the Certificate of Analysis.



## BIOLOGICAL ACTIVITY

### Description

Red-CLA is a biochemical reagent that can be used as a biological material or organic compound for life science related research.

**Caution: Product has not been fully validated for medical applications. For research use only.**

Tel: 609-228-6898

Fax: 609-228-5909

E-mail: [tech@MedChemExpress.com](mailto:tech@MedChemExpress.com)

Address: 1 Deer Park Dr, Suite Q, Monmouth Junction, NJ 08852, USA