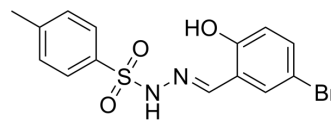


dCeMM1

Cat. No.:	HY-W133627		
CAS No.:	118719-16-7		
Molecular Formula:	C ₁₄ H ₁₃ BrN ₂ O ₃ S		
Molecular Weight:	369.23		
Target:	Molecular Glues		
Pathway:	PROTAC		
Storage:	Powder	-20°C	3 years
		4°C	2 years
	In solvent	-80°C	6 months
		-20°C	1 month



SOLVENT & SOLUBILITY

In Vitro

DMSO : 100 mg/mL (270.83 mM; Need ultrasonic)

Concentration	Mass		
	1 mg	5 mg	10 mg
1 mM	2.7083 mL	13.5417 mL	27.0834 mL
5 mM	0.5417 mL	2.7083 mL	5.4167 mL
10 mM	0.2708 mL	1.3542 mL	2.7083 mL

Please refer to the solubility information to select the appropriate solvent.

BIOLOGICAL ACTIVITY

Description

dCeMM1 is a RBM39 glue degrader. dCeMM1 shows functions by re-directing the activity of the CRL4^{DCAF15} ligase. dCeMM1 decreases the expression of RBM39 levels in WT KBM7 cells^[1].

In Vitro

dCeMM1 (0-100 μM; 3 days) inhibits cell growth with EC₅₀s of 3, 8 μM for WT and UBE2M^{mut} KBM7 cells, respectively^[1]. dCeMM1 (10 μM; 12, 16 h) decreases the expression of RBM39 levels in WT KBM7 cells^[1].
MCE has not independently confirmed the accuracy of these methods. They are for reference only.

Western Blot Analysis^[1]

Cell Line:	WT and UBE2M ^{mut} KBM7 cells
Concentration:	10 μM
Incubation Time:	12, 16 h
Result:	Decreased the expression of RBM39 levels in WT KBM7 cells.

REFERENCES

[1]. Mayor-Ruiz C, et al. Rational discovery of molecular glue degraders via scalable chemical profiling. Nat Chem Biol. 2020 Nov;16(11):1199-1207.

Caution: Product has not been fully validated for medical applications. For research use only.

Tel: 609-228-6898

Fax: 609-228-5909

E-mail: tech@MedChemExpress.com

Address: 1 Deer Park Dr, Suite Q, Monmouth Junction, NJ 08852, USA