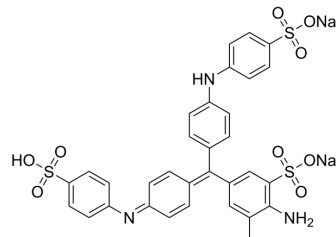


Aniline Blue sodium

Cat. No.:	HY-W133919
CAS No.:	28631-66-5
Molecular Formula:	C ₃₂ H ₂₅ N ₃ Na ₂ O ₉ S ₃
Molecular Weight:	737.73
Target:	Biochemical Assay Reagents
Pathway:	Others
Storage:	4°C, sealed storage, away from moisture and light * In solvent : -80°C, 6 months; -20°C, 1 month (sealed storage, away from moisture and light)



SOLVENT & SOLUBILITY

In Vitro

DMSO : 100 mg/mL (135.55 mM; Need ultrasonic)

Solvent	Mass	Concentration		
		1 mg	5 mg	10 mg
Preparing Stock Solutions	1 mM	1.3555 mL	6.7775 mL	13.5551 mL
	5 mM	0.2711 mL	1.3555 mL	2.7110 mL
	10 mM	0.1356 mL	0.6778 mL	1.3555 mL

Please refer to the solubility information to select the appropriate solvent.

BIOLOGICAL ACTIVITY

Description

Aniline Blue sodium is a water-soluble dye commonly used as a biological stain for the detection of nucleic acids and proteins in various laboratory procedures such as electrophoresis and microscopy. Aniline Blue sodium has unique chemical properties that allow it to bind to specific cellular components, producing a color change that facilitates their visualization and analysis.

In Vitro

Aniline Blue, sodium salt is a biochemical reagent that can be used as a biological material or organic compound for life science related research.

MCE has not independently confirmed the accuracy of these methods. They are for reference only.

Caution: Product has not been fully validated for medical applications. For research use only.

Tel: 609-228-6898

Fax: 609-228-5909

E-mail: tech@MedChemExpress.com

Address: 1 Deer Park Dr, Suite Q, Monmouth Junction, NJ 08852, USA