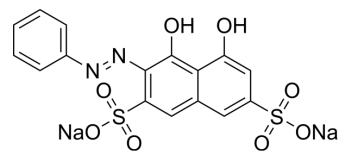


## Chromotrope 2R

Cat. No.:	HY-W133997
CAS No.:	4197-07-3
Molecular Formula:	C <sub>16</sub> H <sub>10</sub> N <sub>2</sub> Na <sub>2</sub> O <sub>8</sub> S <sub>2</sub>
Molecular Weight:	468.37
Target:	Fluorescent Dye
Pathway:	Others
Storage:	Please store the product under the recommended conditions in the Certificate of Analysis.



### BIOLOGICAL ACTIVITY

#### Description

Chromotrope 2R can be used as a chromogenic analytical probe for the quantification of proteins. Basic proteins stained red and the peak wavelength red shifts from 501.6 nm to 567 nm<sup>[1]</sup>.

### REFERENCES

[1]. Wagner BM. Correspondence: Chromotrope 2R. Toxicol Pathol. 2003 Nov-Dec;31(6):717.

**Caution: Product has not been fully validated for medical applications. For research use only.**

Tel: 609-228-6898

Fax: 609-228-5909

E-mail: tech@MedChemExpress.com

Address: 1 Deer Park Dr, Suite Q, Monmouth Junction, NJ 08852, USA