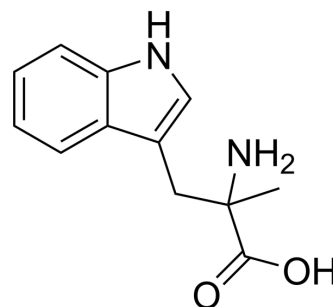


## $\alpha$ -Methyl-DL-tryptophan

<b>Cat. No.:</b>	HY-W142080		
<b>CAS No.:</b>	153-91-3		
<b>Molecular Formula:</b>	C <sub>12</sub> H <sub>14</sub> N <sub>2</sub> O <sub>2</sub>		
<b>Molecular Weight:</b>	218.25		
<b>Target:</b>	Amino Acid Derivatives		
<b>Pathway:</b>	Others		
<b>Storage:</b>	Powder	-20°C	3 years
		4°C	2 years
	In solvent	-80°C	6 months
		-20°C	1 month



### SOLVENT & SOLUBILITY

#### In Vitro

DMSO : 50 mg/mL (229.10 mM; Need ultrasonic)  
Ethanol : 10 mg/mL (45.82 mM; Need ultrasonic)

Preparing Stock Solutions	Solvent Concentration	Mass		
		1 mg	5 mg	10 mg
	1 mM	4.5819 mL	22.9095 mL	45.8190 mL
	5 mM	0.9164 mL	4.5819 mL	9.1638 mL
	10 mM	0.4582 mL	2.2910 mL	4.5819 mL

Please refer to the solubility information to select the appropriate solvent.

#### In Vivo

- Add each solvent one by one: 10% DMSO >> 40% PEG300 >> 5% Tween-80 >> 45% saline  
Solubility:  $\geq$  2.5 mg/mL (11.45 mM); Clear solution
- Add each solvent one by one: 10% DMSO >> 90% (20% SBE- $\beta$ -CD in saline)  
Solubility: 2.5 mg/mL (11.45 mM); Suspended solution; Need ultrasonic
- Add each solvent one by one: 10% DMSO >> 90% corn oil  
Solubility:  $\geq$  2.5 mg/mL (11.45 mM); Clear solution
- Add each solvent one by one: 10% EtOH >> 40% PEG300 >> 5% Tween-80 >> 45% saline  
Solubility:  $\geq$  1 mg/mL (4.58 mM); Clear solution
- Add each solvent one by one: 10% EtOH >> 90% (20% SBE- $\beta$ -CD in saline)  
Solubility:  $\geq$  1 mg/mL (4.58 mM); Clear solution
- Add each solvent one by one: 10% EtOH >> 90% corn oil  
Solubility:  $\geq$  1 mg/mL (4.58 mM); Clear solution

### BIOLOGICAL ACTIVITY

---

**Description**

$\alpha$ -Methyl-DL-tryptophan ( $\alpha$ -Methyltryptophan) is a tryptophan derivative.

---

**Caution: Product has not been fully validated for medical applications. For research use only.**

Tel: 609-228-6898

Fax: 609-228-5909

E-mail: [tech@MedChemExpress.com](mailto:tech@MedChemExpress.com)

Address: 1 Deer Park Dr, Suite Q, Monmouth Junction, NJ 08852, USA