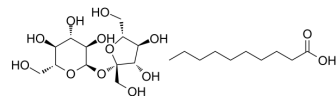


Sucrose monodecanoate

Cat. No.:	HY-W145494
CAS No.:	31835-06-0
Molecular Formula:	C ₂₂ H ₄₂ O ₁₃
Molecular Weight:	514.56
Target:	Biochemical Assay Reagents
Pathway:	Others
Storage:	Please store the product under the recommended conditions in the Certificate of Analysis.



BIOLOGICAL ACTIVITY

Description

Sucrose monodecanoate is a biochemical reagent that can be used as a biological material or organic compound for life science related research.

Caution: Product has not been fully validated for medical applications. For research use only.

Tel: 609-228-6898

Fax: 609-228-5909

E-mail: tech@MedChemExpress.com

Address: 1 Deer Park Dr, Suite Q, Monmouth Junction, NJ 08852, USA