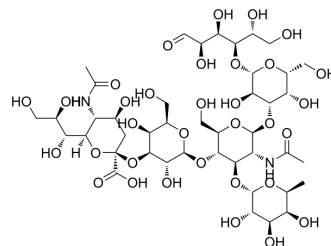


## Sialyl lewis x-lactose

<b>Cat. No.:</b>	HY-W145535
<b>CAS No.:</b>	127923-85-7
<b>Molecular Formula:</b>	C <sub>43</sub> H <sub>72</sub> N <sub>2</sub> O <sub>33</sub>
<b>Molecular Weight:</b>	1145
<b>Target:</b>	Endogenous Metabolite; Biochemical Assay Reagents
<b>Pathway:</b>	Metabolic Enzyme/Protease; Others
<b>Storage:</b>	Please store the product under the recommended conditions in the Certificate of Analysis.



### BIOLOGICAL ACTIVITY

#### Description

Sialyl Lewis X-Lactose is a biochemical reagent that can be used as a biological material or organic compound for life science related research.

**Caution: Product has not been fully validated for medical applications. For research use only.**

Tel: 609-228-6898

Fax: 609-228-5909

E-mail: [tech@MedChemExpress.com](mailto:tech@MedChemExpress.com)

Address: 1 Deer Park Dr, Suite Q, Monmouth Junction, NJ 08852, USA