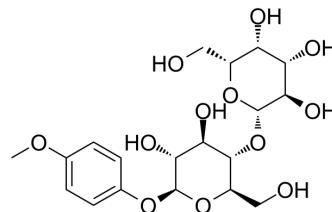


## Gal $\beta$ (1-4)Glc- $\beta$ -MP

Cat. No.:	HY-W145558
CAS No.:	150412-80-9
Molecular Formula:	C <sub>19</sub> H <sub>28</sub> O <sub>12</sub>
Molecular Weight:	448.42
Target:	Biochemical Assay Reagents
Pathway:	Others
Storage:	Please store the product under the recommended conditions in the Certificate of Analysis.



### BIOLOGICAL ACTIVITY

#### Description

Gal $\beta$ (1-4)Glc- $\beta$ -MP is a biochemical reagent that can be used as a biological material or organic compound for life science related research.

**Caution: Product has not been fully validated for medical applications. For research use only.**

Tel: 609-228-6898

Fax: 609-228-5909

E-mail: [tech@MedChemExpress.com](mailto:tech@MedChemExpress.com)

Address: 1 Deer Park Dr, Suite Q, Monmouth Junction, NJ 08852, USA