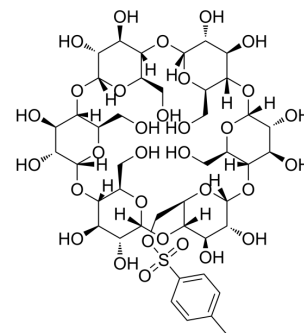


Mono-6-O-(p-toluenesulfonyl)- α -cyclodextrin

| | |
|--------------------|---|
| Cat. No.: | HY-W145591 |
| CAS No.: | 32860-56-3 |
| Molecular Formula: | C ₄₃ H ₆₆ O ₃₂ S |
| Molecular Weight: | 1127.03 |
| Target: | Biochemical Assay Reagents |
| Pathway: | Others |
| Storage: | Please store the product under the recommended conditions in the Certificate of Analysis. |



BIOLOGICAL ACTIVITY

Description

Mono-6-O-(p-toluenesulfonyl)- α -cyclodextrin is a biochemical reagent that can be used as a biological material or organic compound for life science related research.

Caution: Product has not been fully validated for medical applications. For research use only.

Tel: 609-228-6898

Fax: 609-228-5909

E-mail: tech@MedChemExpress.com

Address: 1 Deer Park Dr, Suite Q, Monmouth Junction, NJ 08852, USA