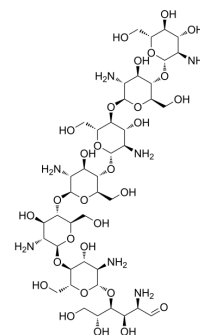


## Chitoheptaose

Cat. No.:	HY-W145695
CAS No.:	68232-35-9
Molecular Formula:	C <sub>42</sub> H <sub>79</sub> N <sub>7</sub> O <sub>29</sub>
Molecular Weight:	1146.11
Target:	Biochemical Assay Reagents
Pathway:	Others
Storage:	-20°C, stored under nitrogen * In solvent : -80°C, 6 months; -20°C, 1 month (stored under nitrogen)



### BIOLOGICAL ACTIVITY

#### Description

Chitoheptaose is a chitosan oligosaccharide. Chitoheptaose is capable of extracting exoskeletons from crustaceans, such as the shells of crabs, shrimp and lobsters. Chitoheptaose has antioxidant, anti-inflammatory and anti-apoptotic activities and can be used in the study of myocarditis. Chitoheptaose has cardioprotective effects and improves cardiac parameters (left ventricular internal size, end-systolic and end-diastolic, ejection fraction and shortening fraction), inflammatory cytokines (IL-1 $\beta$ ) in vanishing models<sup>[1]</sup>.

### REFERENCES

[1]. Zhao Q, et al. Chitoheptaose Promotes Heart Rehabilitation in a Rat Myocarditis Model by Improving Antioxidant, Anti-Inflammatory, and Antiapoptotic Properties. *Oxid Med Cell Longev*. 2020 Apr 11;2020:2394704.

**Caution: Product has not been fully validated for medical applications. For research use only.**

Tel: 609-228-6898

Fax: 609-228-5909

E-mail: tech@MedChemExpress.com

Address: 1 Deer Park Dr, Suite Q, Monmouth Junction, NJ 08852, USA