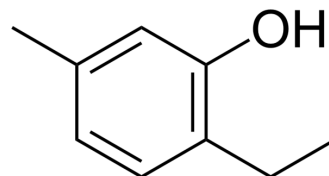


## 2-Ethyl-5-methylphenol

Cat. No.:	HY-W167708
CAS No.:	1687-61-2
Molecular Formula:	C <sub>9</sub> H <sub>12</sub> O
Molecular Weight:	136.19
Target:	Others
Pathway:	Others
Storage:	Please store the product under the recommended conditions in the Certificate of Analysis.



### BIOLOGICAL ACTIVITY

#### Description

2-Ethyl-5-methylphenol is an aromatic compound that can be detected in breakfast cereals, cereals and grain products<sup>[1]</sup>.

### REFERENCES

[1]. Wilkins CK, et al. Volatile metabolites of some barley storage molds. *Int J Food Microbiol.* 1989 Feb;8(1):11-7.

**Caution: Product has not been fully validated for medical applications. For research use only.**

Tel: 609-228-6898

Fax: 609-228-5909

E-mail: tech@MedChemExpress.com

Address: 1 Deer Park Dr, Suite Q, Monmouth Junction, NJ 08852, USA