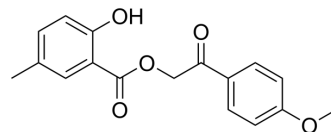


## KLF10-IN-1

Cat. No.:	HY-W181026
CAS No.:	1197834-98-2
Molecular Formula:	C <sub>17</sub> H <sub>16</sub> O <sub>5</sub>
Molecular Weight:	300.31
Target:	Others
Pathway:	Others
Storage:	Please store the product under the recommended conditions in the Certificate of Analysis.



## BIOLOGICAL ACTIVITY

Description	KLF10-IN-1 (#48-15) is a KLF10 inhibitor with an IC <sub>50</sub> value of 40 μM against the KLF10 reporter gene. KLF10-IN-1 can suppress KLF10-DNA binding and transcriptional activity, block the conversion of CD4+CD25 <sup>-</sup> T cells into CD4+CD25 <sup>+</sup> T regulatory cells, and downregulate the expression of KLF10 target genes. KLF10-IN-1 can be utilized as a useful mechanistic probe for studying KLF10-mediated effects and T regulatory cell biology <sup>[1]</sup> .
IC <sub>50</sub> & Target	IC <sub>50</sub> : Krüppel-like Factor 10 (KLF10) <sup>[1]</sup> .

## REFERENCES

[1]. Khedkar SA, et al. Discovery of small molecule inhibitors to Krüppel-like factor 10 (KLF10): implications for modulation of T regulatory cell differentiation. *J Med Chem.* 2015;58(3):1466-1478.

**Caution: Product has not been fully validated for medical applications. For research use only.**

Tel: 609-228-6898

Fax: 609-228-5909

E-mail: tech@MedChemExpress.com

Address: 1 Deer Park Dr, Suite Q, Monmouth Junction, NJ 08852, USA