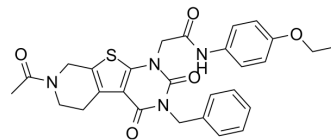


## MCU-i11

Cat. No.:	HY-W194810
CAS No.:	902903-59-7
Molecular Formula:	C <sub>28</sub> H <sub>28</sub> N <sub>4</sub> O <sub>5</sub> S
Molecular Weight:	532.61
Target:	Mitochondrial Metabolism
Pathway:	Metabolic Enzyme/Protease
Storage:	Please store the product under the recommended conditions in the Certificate of Analysis.



## BIOLOGICAL ACTIVITY

Description	MCU-i11 is a negative regulator of the mitochondrial calcium uniporter (MCU) complex. MCU-i11 can reduce mitochondrial Ca <sup>2+</sup> uptake. MCU-i11 impairs muscle cell growth <sup>[1]</sup> .
IC <sub>50</sub> & Target	Mito_x0002_chondrial calcium uniporter (MCU) <sup>[1]</sup>

## REFERENCES

[1]. Di Marco G, et al. A High-Throughput Screening Identifies MICU1 Targeting Compounds. Cell Rep. 2020 Feb 18;30(7):2321-2331.e6.

**Caution: Product has not been fully validated for medical applications. For research use only.**

Tel: 609-228-6898

Fax: 609-228-5909

E-mail: tech@MedChemExpress.com

Address: 1 Deer Park Dr, Suite Q, Monmouth Junction, NJ 08852, USA