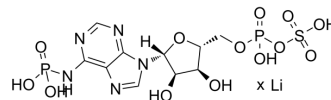


## Adenosine 3'-phosphate 5'-phosphosulfate lithium

Cat. No.:	HY-W250153
CAS No.:	109434-21-1
Molecular Formula:	C <sub>10</sub> H <sub>15</sub> N <sub>5</sub> O <sub>13</sub> P <sub>2</sub> S.xLi
Target:	Biochemical Assay Reagents
Pathway:	Others
Storage:	Please store the product under the recommended conditions in the Certificate of Analysis.



### BIOLOGICAL ACTIVITY

#### Description

Adenosine 3'-phosphate 5'-phosphosulfate lithium is a co-substrate used for the sulfonation of glycans. Adenosine 3'-phosphate 5'-phosphosulfate lithium can be used for Golgi-resident PAP-specific 3'-phosphatase-coupled sulfotransferase assays, which as donor substrate to transfer a sulfonate group<sup>[1][2]</sup>.

### REFERENCES

- [1]. Prather B, et, al. Golgi-resident PAP-specific 3'-phosphatase-coupled sulfotransferase assays. *Anal Biochem.* 2012 Apr 1;423(1):86-92.
- [2]. Ryan P. Modified indole alkaloids for therapeutic uses. WO2022133314.

**Caution: Product has not been fully validated for medical applications. For research use only.**

Tel: 609-228-6898

Fax: 609-228-5909

E-mail: [tech@MedChemExpress.com](mailto:tech@MedChemExpress.com)

Address: 1 Deer Park Dr, Suite Q, Monmouth Junction, NJ 08852, USA