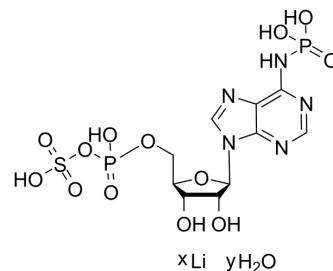


Adenosine 3'-phosphate 5'-phosphosulfate lithium, hydrate

Cat. No.:	HY-W250153A
Molecular Formula:	$C_{10}H_{15}N_5O_{13}P_2S \cdot xLi \cdot yH_2O$
Target:	Biochemical Assay Reagents
Pathway:	Others
Storage:	Please store the product under the recommended conditions in the Certificate of Analysis.



BIOLOGICAL ACTIVITY

Description

Adenosine 3'-phosphate 5'-phosphosulfate lithium is a co-substrate used for the sulfonation of glycans. Adenosine 3'-phosphate 5'-phosphosulfate lithium can be used for Golgi-resident PAP-specific 3'-phosphatase-coupled sulfotransferase assays, which as donor substrate to transfer a sulfonate group^{[1][2]}.

REFERENCES

- [1]. Prather B, et, al. Golgi-resident PAP-specific 3'-phosphatase-coupled sulfotransferase assays. *Anal Biochem.* 2012 Apr 1;423(1):86-92.
- [2]. Prather B, et, al. Golgi-resident PAP-specific 3'-phosphatase-coupled sulfotransferase assays. *Anal Biochem.* 2012 Apr 1;423(1):86-92.

Caution: Product has not been fully validated for medical applications. For research use only.

Tel: 609-228-6898

Fax: 609-228-5909

E-mail: tech@MedChemExpress.com

Address: 1 Deer Park Dr, Suite Q, Monmouth Junction, NJ 08852, USA