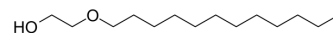


## 2-(Dodecyloxy)ethanol

Cat. No.:	HY-W250300
CAS No.:	4536-30-5
Molecular Formula:	C <sub>14</sub> H <sub>30</sub> O <sub>2</sub>
Molecular Weight:	230.39
Target:	Biochemical Assay Reagents
Pathway:	Others
Storage:	Please store the product under the recommended conditions in the Certificate of Analysis.



### BIOLOGICAL ACTIVITY

Description	2-(Dodecyloxy)ethanol is a biochemical reagent that can be used as a biological material or organic compound for life science related research.
-------------	---

**Caution: Product has not been fully validated for medical applications. For research use only.**

Tel: 609-228-6898

Fax: 609-228-5909

E-mail: tech@MedChemExpress.com

Address: 1 Deer Park Dr, Suite Q, Monmouth Junction, NJ 08852, USA