

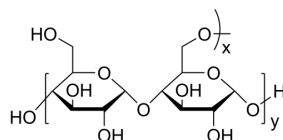
Maltodextrin, dextrose equivalent 16.5-19.5

Cat. No.: HY-W250795
 CAS No.: 9050-36-6
 Batch No.: 322546
 Chemical Name: Maltodextrin, dextrose equivalent 16.5-19.5

PHYSICAL AND CHEMICAL PROPERTIES

Molecular Formula: $(C_6H_{10}O_5)_n \cdot xH_2O$
 Storage: Powder -20°C 3 years
 4°C 2 years
 In solvent -80°C 6 months
 -20°C 1 month

Chemical Structure:



ANALYTICAL DATA

Appearance: White to off-white (Solid)
 Dextrose equivalent 18.8%
 Water(KF): 5.8%
 PH 5.0
 H₂CO₃ Water(KF): 0.18%
 Iodine test: No blue reaction
 Conclusion: The product has been tested and complies with the given specifications.

Caution: Product has not been fully validated for medical applications. For research use only.

Tel: 609-228-6898

Fax: 609-228-5909

E-mail: tech@MedChemExpress.com

Address: 1 Deer Park Dr, Suite Q, Monmouth Junction, NJ 08852, USA