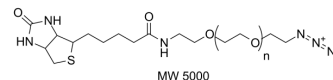


## Biotin-PEG-azide (MW 5000)

Cat. No.:	HY-W250928E
CAS No.:	956494-20-5
Target:	PROTAC Linkers
Pathway:	PROTAC
Storage:	Please store the product under the recommended conditions in the Certificate of Analysis.



### BIOLOGICAL ACTIVITY

Description	Biotin-PEG-azide (MW 5000) is a PEG-based PROTAC linker can be used in the synthesis of PROTAC <sup>[1]</sup> .
IC <sub>50</sub> & Target	PEGs
In Vitro	<p>PROTACs contain two different ligands connected by a linker; one is a ligand for an E3 ubiquitin ligase and the other is for the target protein<sup>[1]</sup>.</p> <p>PROTACs exploit the intracellular ubiquitin-proteasome system to selectively degrade target proteins<sup>[1]</sup>.</p> <p>MCE has not independently confirmed the accuracy of these methods. They are for reference only.</p>

### REFERENCES

[1]. An S, et al. Small-molecule PROTACs: An emerging and promising approach for the development of targeted therapy drugs. EBiomedicine. 2018 Oct;36:553-562.

**Caution: Product has not been fully validated for medical applications. For research use only.**

Tel: 609-228-6898

Fax: 609-228-5909

E-mail: tech@MedChemExpress.com

Address: 1 Deer Park Dr, Suite Q, Monmouth Junction, NJ 08852, USA