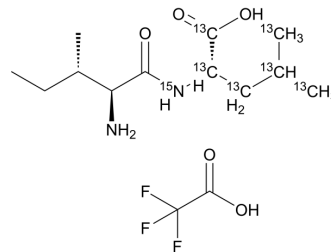


## Ile-(Leu-<sup>13</sup>C<sub>6</sub>, <sup>15</sup>N)-OH

<b>Cat. No.:</b>	HY-W269700S
<b>Molecular Formula:</b>	C <sub>8</sub> <sup>13</sup> C <sub>6</sub> H <sub>25</sub> F <sub>3</sub> N <sup>15</sup> NO <sub>5</sub>
<b>Molecular Weight:</b>	365.3
<b>Target:</b>	Isotope-Labeled Compounds
<b>Pathway:</b>	Others
<b>Storage:</b>	Please store the product under the recommended conditions in the Certificate of Analysis.



### BIOLOGICAL ACTIVITY

#### Description

Ile-(Leu-<sup>13</sup>C<sub>6</sub>,<sup>15</sup>N)-OH (TFA) is <sup>13</sup>C- and <sup>15</sup>N-labeled L-Isoleucyl-L-leucine (HY-W269700). L-Isoleucyl-L-leucine has a role as a metabolite and can be used to inhibit movement-induced muscle damage and muscle defective condition.

### REFERENCES

[1]. Andrea Briones, et al. An SI-traceable reference material for virus-like particles. *iScience*. 2022 Apr 25;25(5):104294.

**Caution: Product has not been fully validated for medical applications. For research use only.**

Tel: 609-228-6898

Fax: 609-228-5909

E-mail: [tech@MedChemExpress.com](mailto:tech@MedChemExpress.com)

Address: 1 Deer Park Dr, Suite Q, Monmouth Junction, NJ 08852, USA