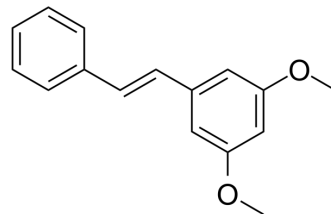


## trans-3,5-Dimethoxystilbene

Cat. No.:	HY-W278867
CAS No.:	21956-56-9
Molecular Formula:	C <sub>16</sub> H <sub>16</sub> O <sub>2</sub>
Molecular Weight:	240.3
Target:	Others
Pathway:	Others
Storage:	4°C, protect from light * In solvent : -80°C, 6 months; -20°C, 1 month (protect from light)



### SOLVENT & SOLUBILITY

In Vitro	DMSO : 100 mg/mL (416.15 mM; Need ultrasonic)																													
	Preparing Stock Solutions	<table border="1"> <thead> <tr> <th>Solvent</th> <th>Mass</th> <th>1 mg</th> <th>5 mg</th> <th>10 mg</th> </tr> </thead> <tbody> <tr> <td>Concentration</td> <td></td> <td></td> <td></td> <td></td> </tr> <tr> <td>1 mM</td> <td></td> <td>4.1615 mL</td> <td>20.8073 mL</td> <td>41.6146 mL</td> </tr> <tr> <td>5 mM</td> <td></td> <td>0.8323 mL</td> <td>4.1615 mL</td> <td>8.3229 mL</td> </tr> <tr> <td>10 mM</td> <td></td> <td>0.4161 mL</td> <td>2.0807 mL</td> <td>4.1615 mL</td> </tr> </tbody> </table>	Solvent	Mass	1 mg	5 mg	10 mg	Concentration					1 mM		4.1615 mL	20.8073 mL	41.6146 mL	5 mM		0.8323 mL	4.1615 mL	8.3229 mL	10 mM		0.4161 mL	2.0807 mL	4.1615 mL			
		Solvent	Mass	1 mg	5 mg	10 mg																								
		Concentration																												
		1 mM		4.1615 mL	20.8073 mL	41.6146 mL																								
5 mM		0.8323 mL	4.1615 mL	8.3229 mL																										
10 mM		0.4161 mL	2.0807 mL	4.1615 mL																										
Please refer to the solubility information to select the appropriate solvent.																														
In Vivo	1. Add each solvent one by one: 10% DMSO >> 90% corn oil Solubility: ≥ 2.5 mg/mL (10.40 mM); Clear solution																													

### BIOLOGICAL ACTIVITY

Description	trans-3,5-Dimethoxystilbene (cis-Pinosylvin dimethyl ether) is a natural product that has been isolated from the benzene extract of the bark of jack pine ( <i>Pinus banksiana</i> ) <sup>[1]</sup> .
-------------	---

### REFERENCES

[1]. Extractives of jack pine bark: Occurrence of cis- and trans-pinosylvin dimethyl ether and ferulic acid esters. J.W.Rowe, et al. Phytochemistry. 1969 Jan, 8 (1): 235-241.

---

**Caution: Product has not been fully validated for medical applications. For research use only.**

Tel: 609-228-6898

Fax: 609-228-5909

E-mail: [tech@MedChemExpress.com](mailto:tech@MedChemExpress.com)

Address: 1 Deer Park Dr, Suite Q, Monmouth Junction, NJ 08852, USA