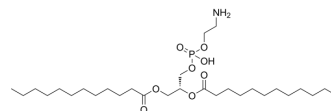


1,2-Dilauroyl-sn-glycero-3-phosphoethanolamine

| | |
|--------------------|---|
| Cat. No.: | HY-W322225 |
| CAS No.: | 59752-57-7 |
| Molecular Formula: | C ₂₉ H ₅₈ NO ₈ P |
| Molecular Weight: | 579.75 |
| Target: | Liposome |
| Pathway: | Metabolic Enzyme/Protease |
| Storage: | Please store the product under the recommended conditions in the Certificate of Analysis. |



BIOLOGICAL ACTIVITY

Description

1,2-Dilauroyl-sn-glycero-3-phosphoethanolamine (DLPE) is a derivative of phosphatidylethanolamine with lauric acid (12:0) acyl chains. 1,2-Dilauroyl-sn-glycero-3-phosphoethanolamine can be used as liposomes^[1].

REFERENCES

[1]. Mohsen M Mady, et al. Efficient gene delivery with serum into human cancer cells using targeted anionic liposomes. J Drug Target. 2004 Jan;12(1):11-8.

Caution: Product has not been fully validated for medical applications. For research use only.

Tel: 609-228-6898

Fax: 609-228-5909

E-mail: tech@MedChemExpress.com

Address: 1 Deer Park Dr, Suite Q, Monmouth Junction, NJ 08852, USA