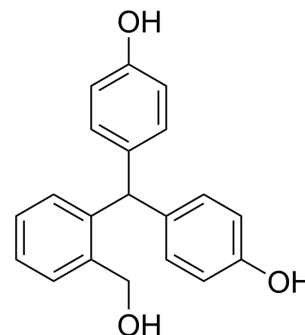


Phenolphthalol

Cat. No.:	HY-W326021
CAS No.:	81-92-5
Molecular Formula:	C ₂₀ H ₁₈ O ₃
Molecular Weight:	306.36
Target:	Others
Pathway:	Others
Storage:	Please store the product under the recommended conditions in the Certificate of Analysis.



BIOLOGICAL ACTIVITY

Description

Phenolphthalol is a laxative in agent preparations and also estrogenically active^[1].

REFERENCES

[1]. Bitman J, et al. Estrogenic activity of DDT analogs and polychlorinated biphenyls. J Agric Food Chem. 1970;18(6):1108-1112.

Caution: Product has not been fully validated for medical applications. For research use only.

Tel: 609-228-6898

Fax: 609-228-5909

E-mail: tech@MedChemExpress.com

Address: 1 Deer Park Dr, Suite Q, Monmouth Junction, NJ 08852, USA