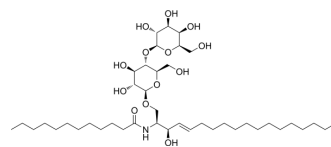


## Trihexosylceramide (d18:1/12:0)

Cat. No.:	HY-W341625
CAS No.:	474943-80-1
Molecular Formula:	C <sub>42</sub> H <sub>79</sub> NO <sub>13</sub>
Molecular Weight:	806.08
Target:	Others
Pathway:	Others
Storage:	-20°C, protect from light * In solvent : -80°C, 6 months; -20°C, 1 month (protect from light)



### SOLVENT & SOLUBILITY

In Vitro	THF : 0.2 mg/mL (0.25 mM; Need ultrasonic)
----------	--

### BIOLOGICAL ACTIVITY

Description	Trihexosylceramide (d18:1/12:0) is a type of Trihexosylceramide. In the renal tissue of heterozygous Fabry's disease, the cytoplasm of glomerular epithelial cells appears foamy. Trihexosylceramide accumulated in glomerular epithelial cells as identified by immunostaining <sup>[1][2]</sup> .
-------------	---

### REFERENCES

- [1]. Wang JR, et al. Improved sphingolipidomic approach based on ultra-high performance liquid chromatography and multiple mass spectrometries with application to cellular neurotoxicity. *Anal Chem.* 2014 Jun 17;86(12):5688-96.
- [2]. Fukushima M, et al. A female heterozygous patient with Fabry's disease with renal accumulation of trihexosylceramide detected with a monoclonal antibody. *Am J Kidney Dis.* 1995 Dec;26(6):952-5.

**Caution: Product has not been fully validated for medical applications. For research use only.**

Tel: 609-228-6898

Fax: 609-228-5909

E-mail: tech@MedChemExpress.com

Address: 1 Deer Park Dr, Suite Q, Monmouth Junction, NJ 08852, USA