

## p-Cresol glucuronide

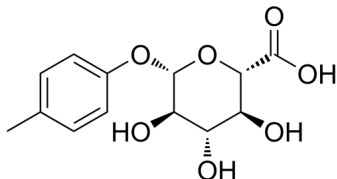
---

Cat. No.: HY-W416250  
Batch No.: 357464  
CAS No.: 17680-99-8  
Molecular Formula: C<sub>13</sub>H<sub>16</sub>O<sub>7</sub>

### ANALYTICAL DATA

Theoretical: C(54.93%)、H(5.67%)、N(-)  
Result: C(51.71%)、H(5.91%)、N(-)

Chemical Structure:



**Caution: Product has not been fully validated for medical applications. For research use only.**

Tel: 609-228-6898

Fax: 609-228-5909

E-mail: [tech@MedChemExpress.com](mailto:tech@MedChemExpress.com)

Address: 1 Deer Park Dr, Suite Q, Monmouth Junction, NJ 08852, USA