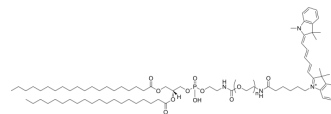


DSPE-PEG-Cy5, MW 2000

Cat. No.:	HY-W440911
Target:	Liposome
Pathway:	Metabolic Enzyme/Protease
Storage:	Please store the product under the recommended conditions in the Certificate of Analysis.



BIOLOGICAL ACTIVITY

Description

DSPE-PEG-Cy5, MW 2000 a red fluorophore polyPEG with lipid hydrophobic tails. The Cy5 fluorophore is commonly used in applications such as protein and nucleic acid labeling for imaging, flow cytometry, and genomic applications. The dye has an excitation peak at 651 nm and an emission peak at 670 nm.

Caution: Product has not been fully validated for medical applications. For research use only.

Tel: 609-228-6898

Fax: 609-228-5909

E-mail: tech@MedChemExpress.com

Address: 1 Deer Park Dr, Suite Q, Monmouth Junction, NJ 08852, USA