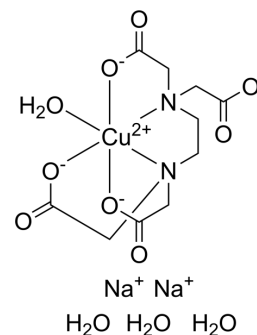


Cu(II)-EDTA disodium tetrahydrate

Cat. No.:	HY-W582564
CAS No.:	36703-61-4
Molecular Formula:	$C_{10}H_{20}CuN_2Na_2O_{12}$
Molecular Weight:	469.8
Target:	Others
Pathway:	Others
Storage:	Please store the product under the recommended conditions in the Certificate of Analysis.



BIOLOGICAL ACTIVITY

Description

Cu(II)-EDTA disodium tetrahydrate, a typical contaminant in industrial wastewater, is an EDTA-complexed heavy metal. Cu(II)-EDTA disodium tetrahydrate can be used in research on the recovery of heavy metal resources from mixed wastewater^[1].

REFERENCES

[1]. Zhang W, et al. Competitive adsorption behavior and mechanisms of coexisting EDTA-Cu(II) and EDTA-Cr(III) on ferrihydrite[J]. Colloids and Surfaces A: Physicochemical and Engineering Aspects, 2023, 670: 131566.

Caution: Product has not been fully validated for medical applications. For research use only.

Tel: 609-228-6898

Fax: 609-228-5909

E-mail: tech@MedChemExpress.com

Address: 1 Deer Park Dr, Suite Q, Monmouth Junction, NJ 08852, USA